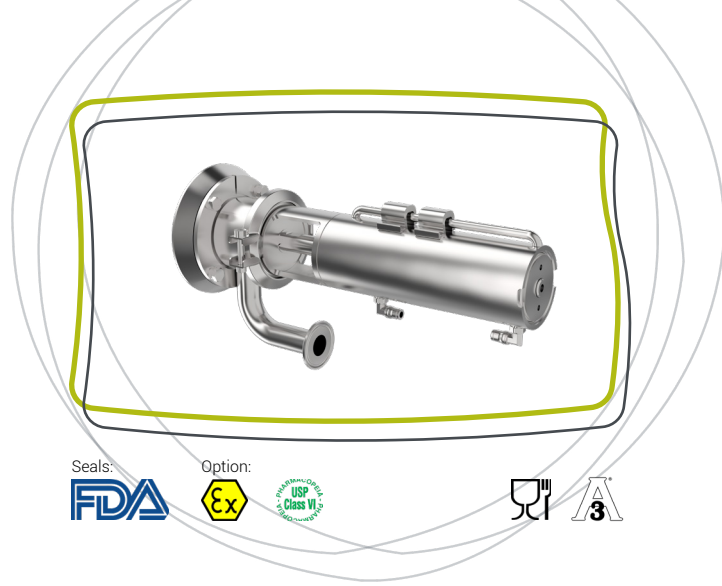


LPA-A[®]

3-A flush washing valve
for agitated tank

LAURÉAT
CONCOURS IPA
DE L'INNOVATION



Presentation

The LPA-A washing valve has been designed to provide enhanced cleaning of the tank during CIP cycles: it reaches the "blind spots" generated by components such as agitators and their shafts, anchors and scrapers.

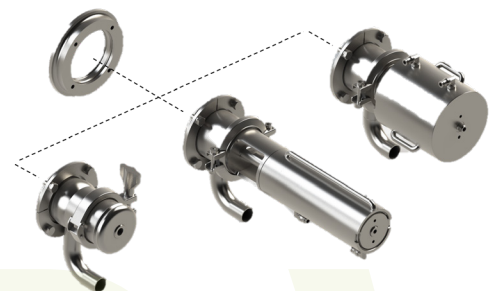
Each LPA-A valve is unique: SERVINOX studies the impact zones according to the characteristics of the tank and its components, for optimum washing efficiency and reduced cycle time. Mounted on the tank shell, its flush design means that it does not interfere with or damage the wall scrapers.

Key features

- 3-A 78-03 certified washing valve
- Efficiency: Enhanced tank cleaning with the customised design of the spray grid, of which the number, size and orientation of the holes are calculated according to the positioning of the valve and the areas to be impacted inside the tank
- Profitability: Reduced CIP cycle costs
- Productivity: Increased plant availability with reduced CIP times
- Environment: Saves water and detergent
- Autonomy: In the event of a power cut, an assistance spring keeps it closed (double-acting valve control in normal operation)
- Modularity: Body interchangeability with LPAH & LRA valves

Applications

- All types of products
- For enhanced sanitation of agitated process tanks with scraping blades or proximity scrapers



Technical features

Sizes: DN 25

SERVINOX

Inlet fitting: Welding

Connection to the tank: Flush welding flange

Operating pressure in tank: From -1 to +6 bar (if double-acting actuator)

Sealing in the tank (in the absence of air in the cylinder): From -1 to +1.5 bar

Operating temperature: From +1°C to +120°C

Washing flowrate: 6 m³/h at 2 bar

Start of opening CIP side: 0.6 bar

Start of opening inner side: 4 bar

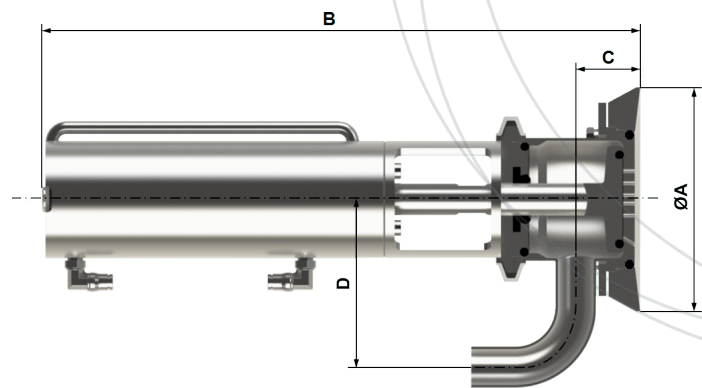
Materials

- Parts in contact with the product: Stainless steel 1.4404 (316L)
- Other metallic parts: Stainless steel 1.4307 (304L)
- Cylinder body: Ground cylinder tube Stainless steel 1.4307 (304L)
- Seals in contact with the product: EPDM (Ethylene Propylene Diene Monomer)

Dimensions in mm

Standard version

Sizes	DN 25 (1")
ØA	139
B	370
C	40
D	110



Options

- Control unit
- Position sensor
- Other inlet connection: clamp
- Specific surface finish
- Sealing: FKM (Fluorocarbon rubber, eq. Viton®) and Silicone (VMQ)

Warranty

12 months as from the date of dispatch (except for special conditions).

Conformity

- 3-A 78-03 certified valve
- Elastomer seals compliant with FDA CFR 21.177. 2600, 3-A Class I and Regulation (EC) 1935/2004
- Optional: compliant with ATEX 2014/34/EU, zones 1 & 2, gas and dust directive
- Option: Membranes compliant with USP Class VI

Non-contractual document and visuals, subject to change without notice.

Only the commercial offer and the technical manual supplied with the equipment may be used for technical and legal purposes.